

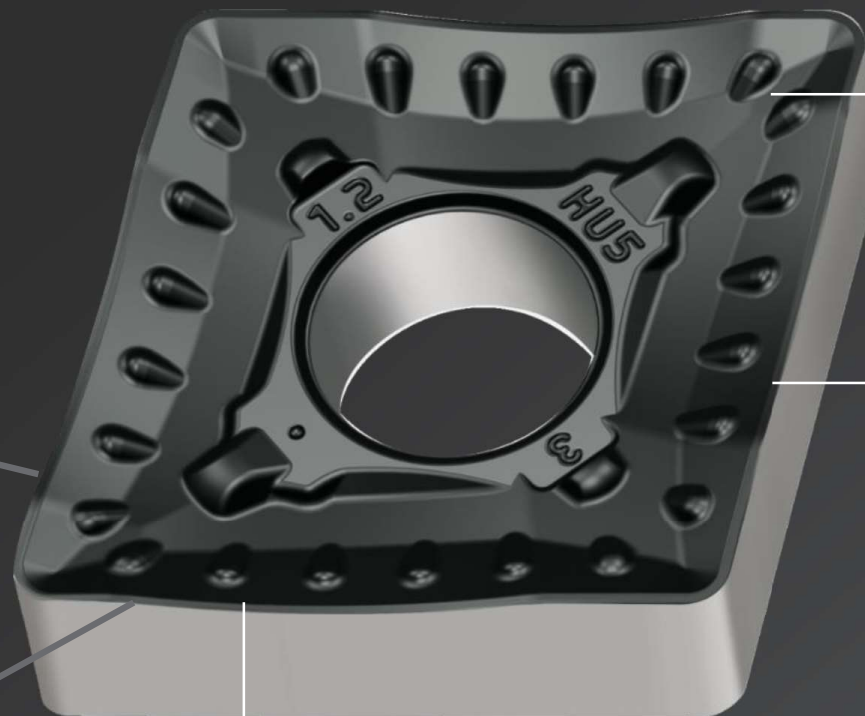
# Walter HU5 Geometry

## Maximum Metal Removal Rate ISO M & S

Product  
Description

**Variable rake angle in the corner radius**

- lower cutting force
- long tool life



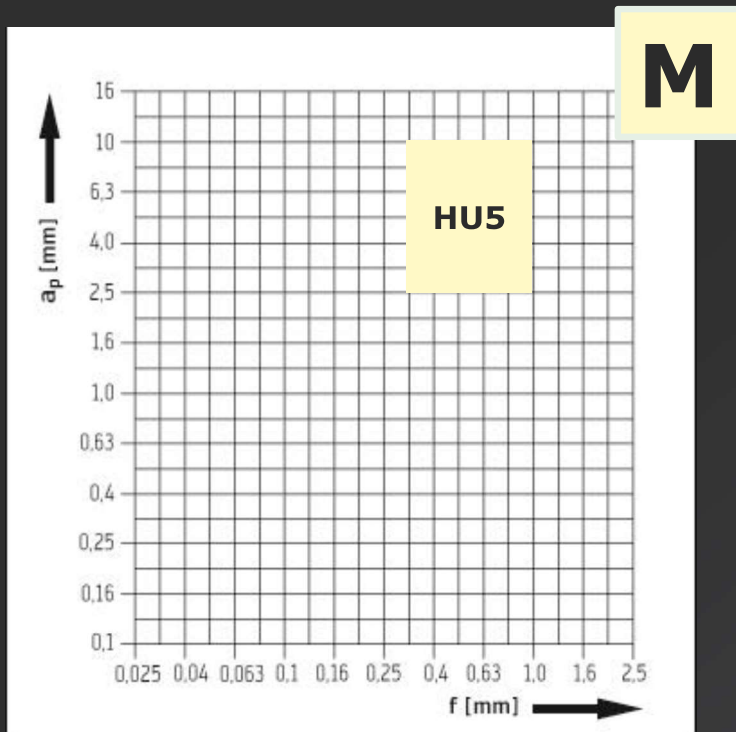
**Tiger-tec® Silver**  
→ WMP20S, WSM..S,  
WPP..S

**"Protected" main cutting edge**  
→ Prevents fractures

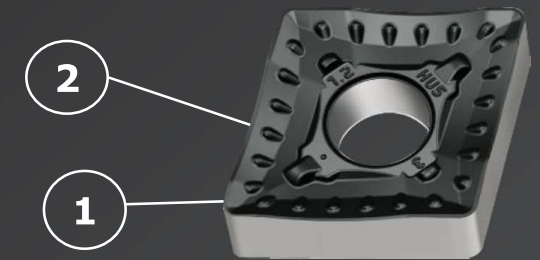
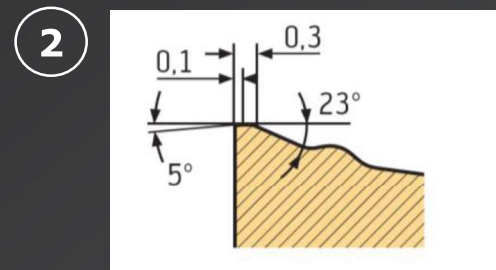
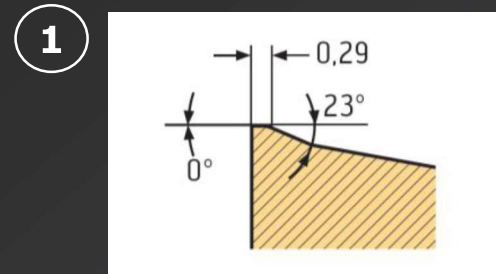
**Curved cutting edge and deep chip breaker groove**  
→ Low cutting forces at high feed rates

# Walter HU5 Geometry Details Geometry

Product Description



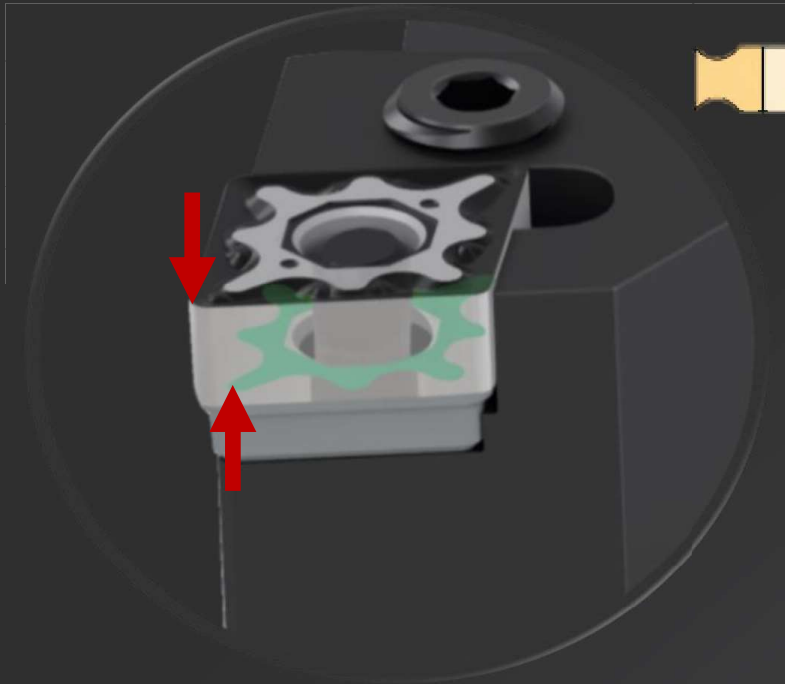
$a_p$ : 2.5–10.0 mm  
 $f$ : 0.30–1.00 mm



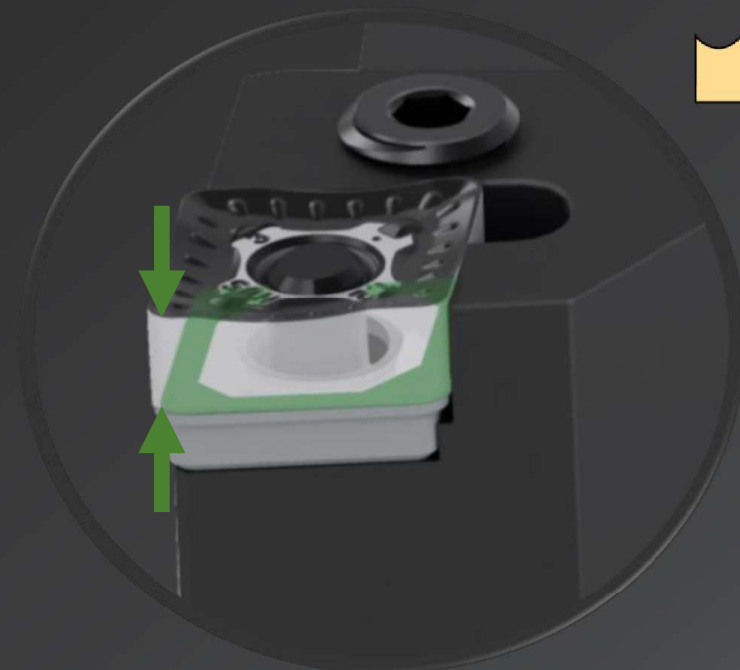
Remarks:  
 The small  $-5^\circ \times 0.1$  mm negative chamfer makes the main cutting edge stronger, i.e. for skin machining.

# Walter HU5 Geometry Maximum Metal Removal Rate ISO M & S

Customer  
Benefits



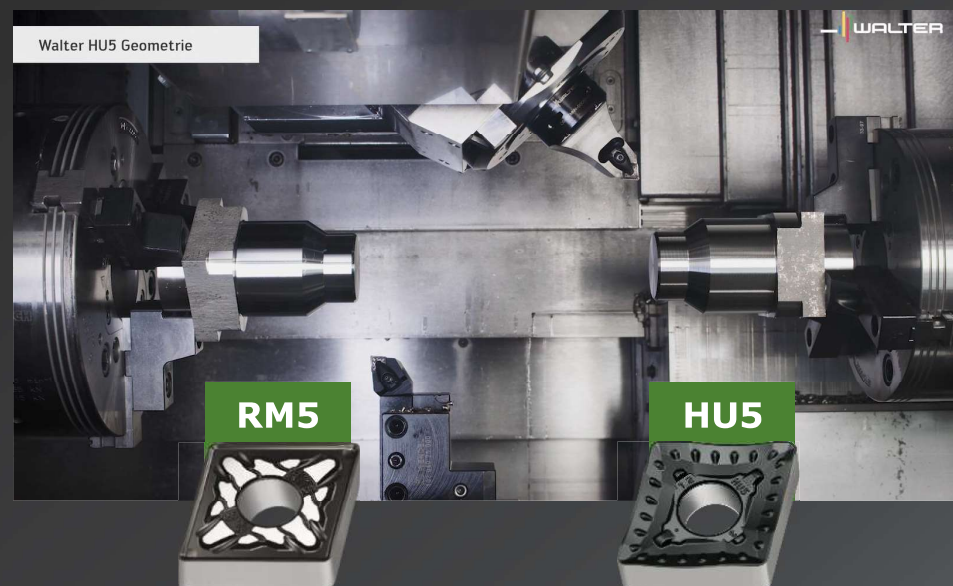
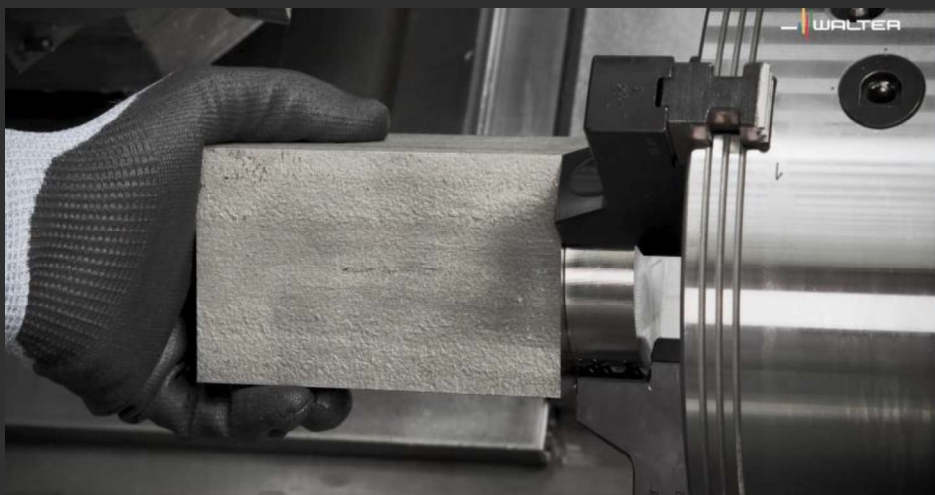
CNMG120412-MM5



CNM120412-HU5

Maximum contact surface – for  
**higher feeds and greater depth of cut.**

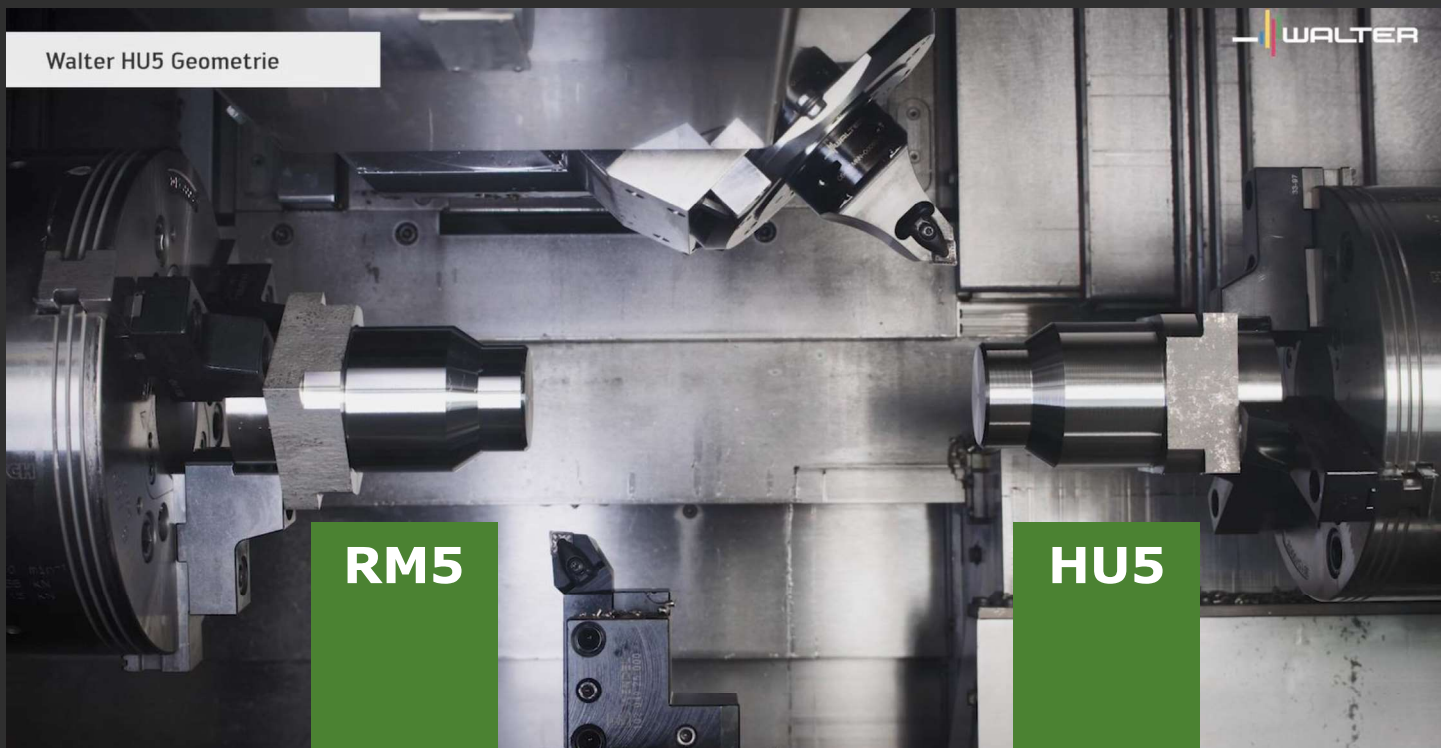
# Walter HU5 Geometry Maximum Metal Removal Rate ISO M & S



How much faster can you produce this workpiece by only changing the insert/parameters from **CNMG120412-RM5 WMP20S** to **CNMM120412-HU5 WMP20S** ?

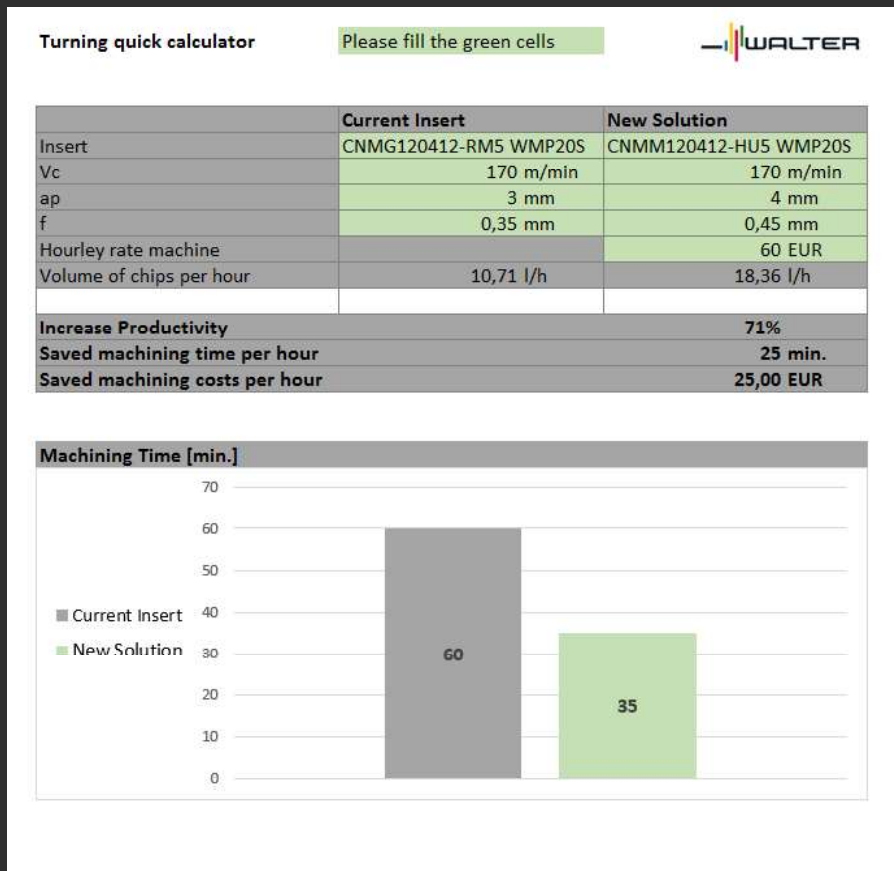
# Walter HU5 Geometry Maximum Metal Removal Rate ISO M & S

Customer  
Benefits



# Walter HU5 Geometry Turning Quick Calculator

Customer  
Benefits



Show in just 1 min how high the savings for the customer are.